

2020 ANNUAL REPORT

FRESH LOCAL FOOD COLLABORATIVE

CONTENTS

Background 3

Company Timeline 4

Farm2School 5

Farm2Table 7

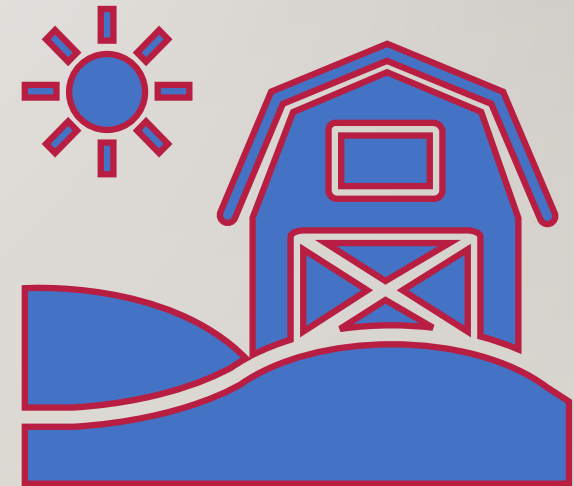
Grants Received 8

Economic Development 9

Income Statement 11

BACKGROUND

- The 2020 Annual Report is a record of our efforts to support local agriculture in SE Indiana. We connect local producers with new customers to encourage sustainable practices.
- Our goal is to recruit students and new farmers to consider agriculture as a post-secondary degree or career choice.
- To accomplish this goal, we offer Farm2School and Farm2Table programming in Dearborn, Franklin, Ohio, and Ripley Counties in SE Indiana and Harrison, Ohio.



TIMELINE



- Our organization began in 2015.
- Researching past Board of Director's minutes, annual reports, funding reports, social media, and camera rolls, we have created an archive of activity to tell the story of our journey.
- You can view this timeline at www.Fresh-Local.org.

FARM2SCHOOL HARVEST OF THE MONTH

Pictured Left: Rising Sun, Ohio County with spaghetti squash; pictured Right: Oldenburg Academy, Ripley County with fresh cracked eggs.

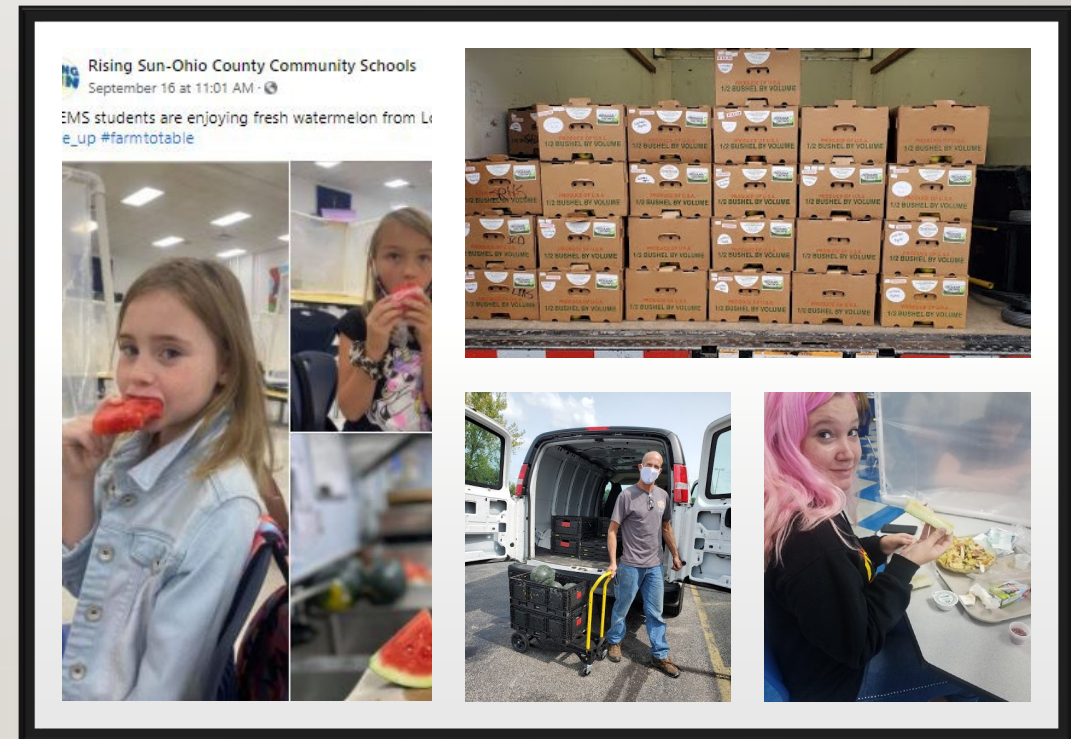
- January = 2000 students in 6 buildings
 - Spaghetti squash from Dearborn County
 - Most served topped with marinara sauce as though it was spaghetti
- February = 1500 students in 7 building
 - Fresh cracked eggs from Ripley County
 - Commodity eggs come scrambled in a bag and are reheated in most schools, so this was a special treat.
- March through May = No programming as everyone adjusted to new Covid-19 restrictions.



FARM2SCHOOL HARVEST OF THE MONTH CONTINUED

- August = 3295 students in 12 buildings
 - Cucumbers from Dearborn County
 - Most served in spears with ranch dip
- September = 4912 students in 19 buildings
 - Watermelon from Dearborn County
 - Served in spears to reduce prep work
- October = 5917 students in 22 buildings
 - Great Lakes Apple Crunch participation
 - Brought apples from Evansville, IN to compensate for a lack of apple crop in SE Indiana from late spring freeze.

Pictured Left: Rising Sun Schools, Ohio County celebrating watermelon, the giant truckload of apples from Evansville, FLFC volunteers delivering watermelon, and Rising Sun, Ohio county students with cucumbers.



2020 APPLE CRUNCH

- Purdue Extension reported 27,000 apples statewide. 21% or 5,600 of those apples were part of our efforts. The project has grown our original one school in 2017 to now be offered in 10 school districts across our region.
- Because of a late spring freeze, apples were not available in our area, so we made arrangements with our community partners to bring them in from Evansville, IN.



Mrs. Patz's Adult Roles class is ready for salad day! #rise_up



FARM2SCHOOL TOWER GARDENS

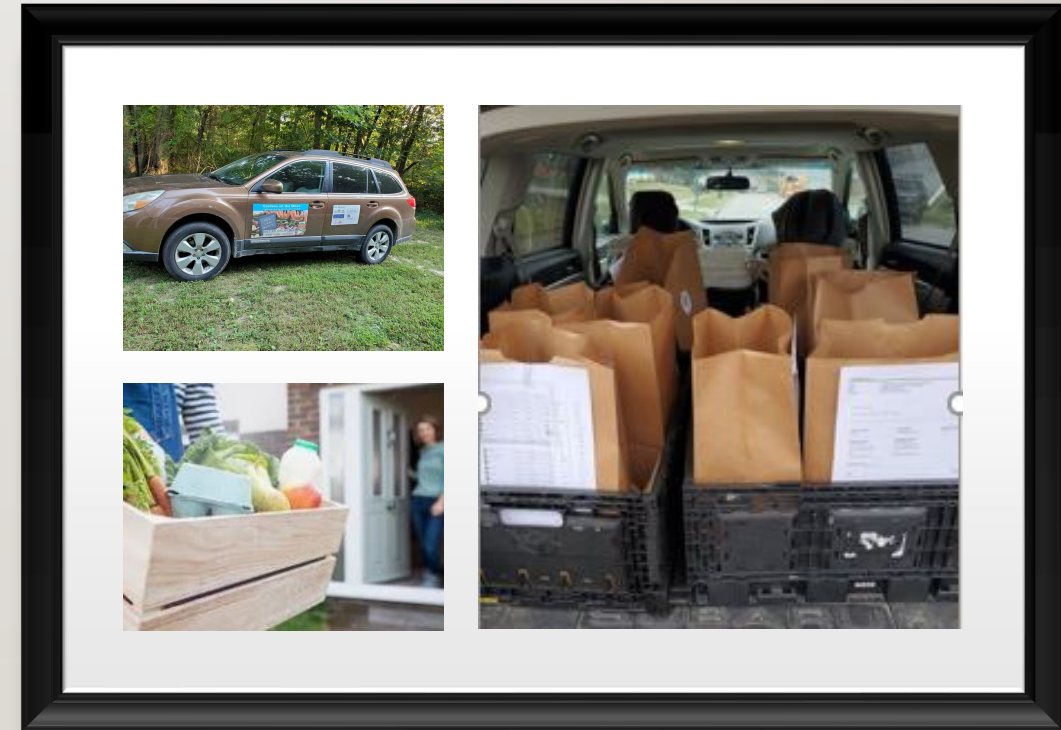
- In 2020, FLFC added 14 towers to our service area bringing the total number of tower gardens in private and public schools across Dearborn, Franklin, Ohio, and Ripley Counties to 25.
- This amazing education tool helps teachers with Biology, STEM, and Art, as well as helping students understand where their food comes from.
- Students at Batesville Public Schools, JacCenDel Community Schools, South Ripley Schools, Milan, St. Louis Catholic School, Oldenburg Academy, Rising Sun Ohio County Schools, Lawrenceburg Schools, South Dearborn Community Schools, and Sunman Dearborn Community Schools now have access to these vertical gardens.
- We support this technology to encourage students to learn about the science of growing food with new methods like aeroponic, aquaponic, and hydroponic systems.

FARM2TABLE

Funds from REMC RoundUP paid for this billboard on US 50 during July.



- By using the Director's personal vehicle, we were able to divert van rental funds toward the larger deliveries to the schools.
- 42 delivered orders to 22 customers for a total of \$1,358.30 in sales.
- These sales allow us to donate \$67.92 toward Farm2School efforts for the 2021/2022 year.



ECONOMIC DEVELOPMENT

HOW CAN YOU GET INVOLVED?

- 12 farmers earned **\$5,039.75** from new customers.
- Studies show \$.67 of every dollar earned in local Agriculture stays in the community.



- Donate via PayPal at www.Fresh-Local.org.
- We are a registered 501(c)3 and donations are tax deductible.
- Place an order on the Farm2Table marketplace for delivery to your home.
- 5% of your order will be donated to support Farm2School efforts in 2021/2022 school year.

GRANTS RECEIVED

Grants Received		
	USDA FNS	\$78,245.00
	REMC Round Up	\$1,700.00
	Ripley County Community Foundation	\$387.50
	Whole Kids Foundation	\$3,000.00
	Franklin County Community Foundation	\$1,050.00

INCOME STATEMENT

Audited results are still pending.

GinnFarms Corp dba Fresh Local Food Collaborative		For the Year Ending December 31, 2020
Revenue		
Carried Forward	CSX Foundation	\$4,723.37
Grants Received		
	USDA FNS	\$11,157.00
	REMC Round Up	\$1,700.00
	Ripley County Community Foundation	\$3,187.50
	Whole Kids Foundation	\$3,000.00
	Franklin County Community Foundation	\$1,050.00
SBA EIDL Loan	3% interest over 30 yrs.	\$3,800.00
In-kind donations	George Seward	\$509.30
Farm2Table Sales		\$1,358.30
Total Revenue		\$25,762.10
Assets		
	On Account	
	USDA FNS	\$67,088.00
	REMC RoundUP	\$1,850.00
	Whole Kids Foundation	\$900.00
Total Assets		\$69,838.00
Expenses		
General Operating	Advertising	\$1,806.93
	Printing/Office Supplies	\$81.78
	Technology	\$853.77
Farm2School	Harvest of the Month	\$3,681.45
	Towers	\$10,500.00
	Van Rental	\$272.94
Farm2Table	Gas	\$64.41
	Income to Farmers	\$1,358.30
SBA EIDL	Salary - Trish Bellmore	\$3,800.00
Total Expenses		\$22,419.58
Net Income		
(Revenue + Assets - Liability)		\$73,180.52



OUR BOARD OF DIRECTORS – PICTURED LEFT TO RIGHT: BRAD LUSK, TREASURER; TRISH BELLMORE, EXEC. DIRECTOR; ANNA BANKS, SECRETARY; JOHN MILLER, PRESIDENT

THANK YOU FOR YOUR SUPPORT.